

BUSINESSOBJECTS DESKTOP INTELLIGENCE

Desktop Intelligence is an easy-to-use BI tool that enables users to access and analyze data online and offline—and share it within and beyond the enterprise through the single, trusted BI platform from Business Objects.

POWERFUL DESKTOP QUERY AND ANALYSIS

Your sales transaction, inventory, and customer information systems are all in place, but your users are now asking for better access to these data sources. You'll see that as standard reports begin to limit users' ability to drill down for more specific information, the demands on IT resources will also begin to increase.

For users who not only want to view standard reports, but also need to analyze the data they see, perform ad-hoc queries to fetch new data, and create their own reports -- whether they are in the office or on the road – there's BusinessObjects™ Desktop Intelligence™.

Whether users in your organization want easy-to-use reference reports, showing key performance indicators (KPIs) at a glance, or the ability to query and manipulate the results they see, Desktop Intelligence delivers a proven, Windows-based, web-enabled tool for information access, formatting, and analysis. Benefits of BusinessObjects Desktop Intelligence include:

- User-friendly information access and exploration
- Powerful query and offline analysis capabilities
- Built on the proven, market-leading business intelligence (BI) platform



Desktop Intelligence delivers the BusinessObjects two- and three-tier full client to the BusinessObjects XI platform.

USER-FRIENDLY INFORMATION ACCESS AND EXPLORATION

Desktop Intelligence contains powerful query and analysis capabilities within an easy-to-use interface. If your users find a BI tool difficult, the success of the entire information system can

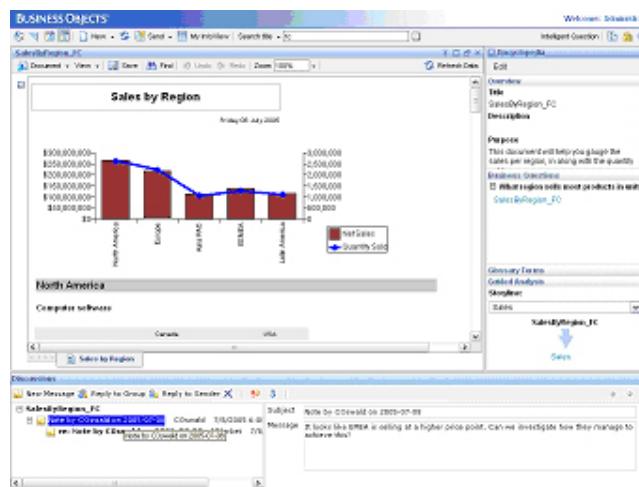
be at risk. Desktop Intelligence lets users easily create reports and provides powerful offline analysis of data—freeing your IT resources to concentrate on other issues.

Robust Semantic Layer

The patented Business Objects semantic layer hides the complexity of underlying data sources by providing a business representation of organizational data. So with Desktop Intelligence, your end users can easily access information with minimal knowledge of underlying data structures. The semantic layer also makes reusable report elements and powerful calculation capabilities available, allowing users to quickly access key information. In addition, you can use the semantic layer's metadata throughout your organization's BI solutions.

Powerful Offline Access

Desktop Intelligence gives your users instant insight into their data wherever they are. Whether they are logged on to your corporate network or traveling on business, powerful analytic functions allow users to quickly drill down into their data (e.g., from region to state to city) or slice and dice to obtain different views of their data (e.g., sales by product or sales by region). Other one-click functions, such as table pivot, monthly variance, ranking, alerts, and filters, help users better understand their data.



Desktop Intelligence users can share their insight with others online or take their analysis offline.

Single Interface

Desktop Intelligence offers your users a single interface for sophisticated database query generation, easy report formatting, and powerful end-user analysis. Desktop-based users are able to utilize a single tool to access information wherever it is stored, integrate it, and share the information with others via the BusinessObjects Enterprise platform. This minimizes training and the need to switch between different tools to meet varying BI requirements.

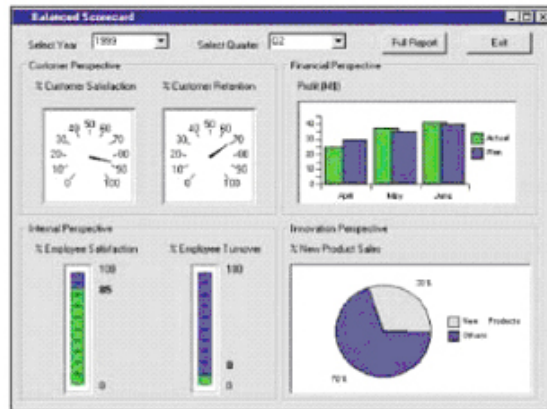
POWERFUL QUERY AND OFFLINE ANALYSIS

The value of a BI tool is relative to the range of information it allows users to access, as well as how easy it is to use. Desktop Intelligence offers a wide variety of data source access, all from a web-enabled, desktop tool. And, its open-object model means it can act as both a BI development platform and as an off-the-shelf BI tool for information analysts.

Multiple Data Source Integration

Users expect and need to be able to compare and combine data from different sources, without worrying about where it comes from. A Desktop Intelligence report can combine data from multiple data sources: relational databases, enterprise resource planning (ERP) systems,

Excel spreadsheets, and XML. In a Desktop Intelligence report, for example, your users can combine information from your cost database or data mart and an Excel spreadsheet to compare your budget to actual results.



Desktop Intelligence can be customized and integrated within other applications.

Efficient, Accurate Data Retrieval

The patented query technology behind a Desktop Intelligence report uses multi-pass SQL to ensure that no matter how complex the database design, your users will get correct results every time. In addition, reports can make full use of aggregate data held in your databases, eliminating unnecessary calculations and reducing access times.

Easy to Customize

Desktop Intelligence includes Microsoft Visual Basic for Applications (VBA) and a powerful, open-object model. Using VBA or other standard Windows programming languages, you can create customized BI applications and embed query and reporting functionality in enterprise applications.

BUILT ON THE PROVEN, MARKET-LEADING BI PLATFORM

Desktop Intelligence is built on the proven and mature capabilities of the BusinessObjects Enterprise platform. This ensures that it can meet the performance demands of an end-user query, reporting, and analysis solution.

Enable BI Standardization via Shared Administration and Security

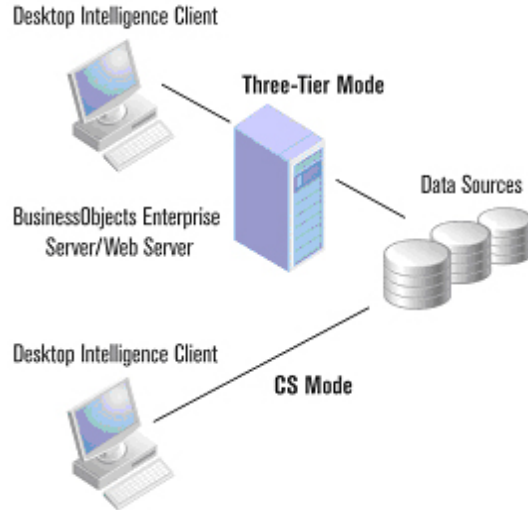
BusinessObjects Enterprise delivers a single point of security and administration for all Desktop Intelligence users. Desktop Intelligence is enabled as a service within the BusinessObjects Enterprise services-oriented architecture (SOA), ensuring that IT can control and monitor both the user experience based on their security profile and overall system performance, scalability, and administration. And, with the central management console (CMC), all user-related activities can be managed over the web. This helps you reduce the overall cost of the BI implementation across the organization and beyond.

Deliver Query and Analysis Globally via a Single Deployment

It is important for organizations to provide multi-lingual information access. Desktop Intelligence supports major Western European languages, as well as multi-byte languages such as Japanese—all from a single server. Going beyond mere interface localization, Desktop Intelligence helps your end users access and create reports containing UNICODE data.

Flexible Deployment Options

Each user group within your organization may have different technical or architectural needs as to how they access their reports. Desktop Intelligence offers the greatest choice of deployment options, including client/server (two-tier) and web-enabled full-client (three-tier with middleware stored and utilized on a central server) all in an environment that is easy to maintain and manage. This provides your IT staff with deployment choices that will ensure you maximize your network resources.



Desktop Intelligence can operate in either two- or three-tier mode.

businessobjects.com

insight.businessobjects.com